

# North Carolina Prescribed Fire Council

Laurel Kays  
NC State Extension Forestry & Southern Fire  
Exchange

[lekays@ncsu.edu](mailto:lekays@ncsu.edu)

# Thank you for having me today!



SOUTHERN  
Fire Exchange

NC STATE

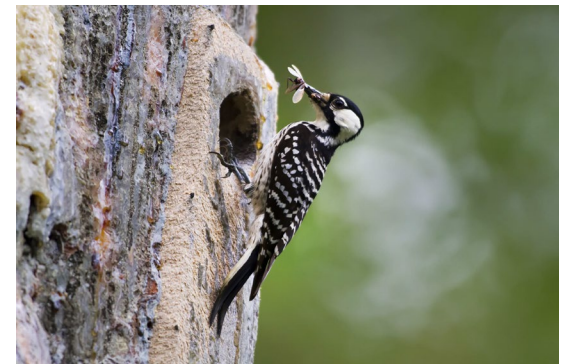
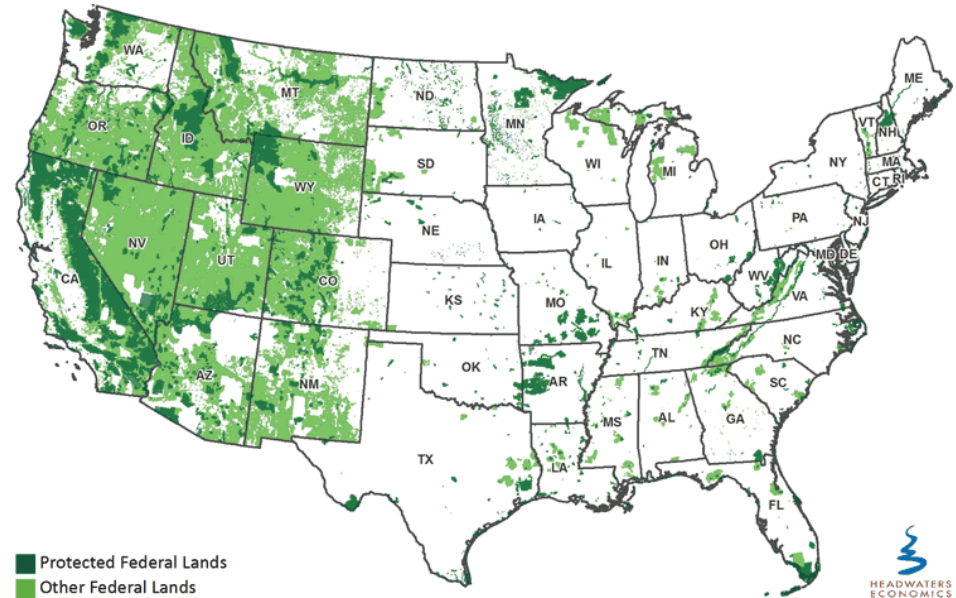
EXTENSION

# Overview

- History
- Organizational Structure
- Issues and Activities
- Other Thoughts

# Prescribed Fire in the Southeast

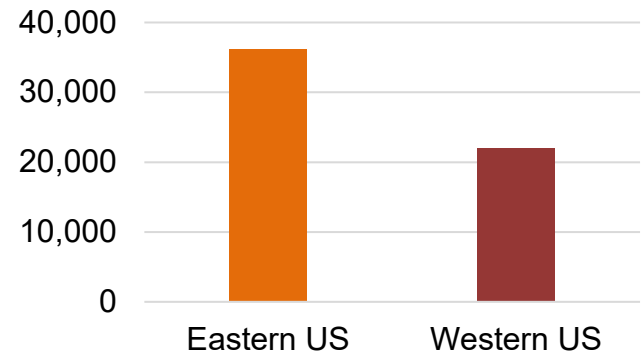
- Large amounts of private, military, lands
- Fire suppression a leading threat to listed plants and other species
- Restoration of fire key component of species and ecosystem restoration



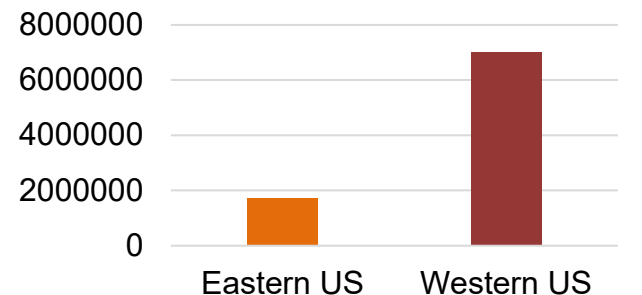
# Wildfire in the Southeast

- Fall and spring most active fire seasons
- Majority ignited by humans
- Challenges: cross-boundary management, nearby communities, expanding WUI, etc.
- Longer recent history of prescribed fire means solid evidence of connection to wildfire risk-reduction

Number of Wildfires (2018)

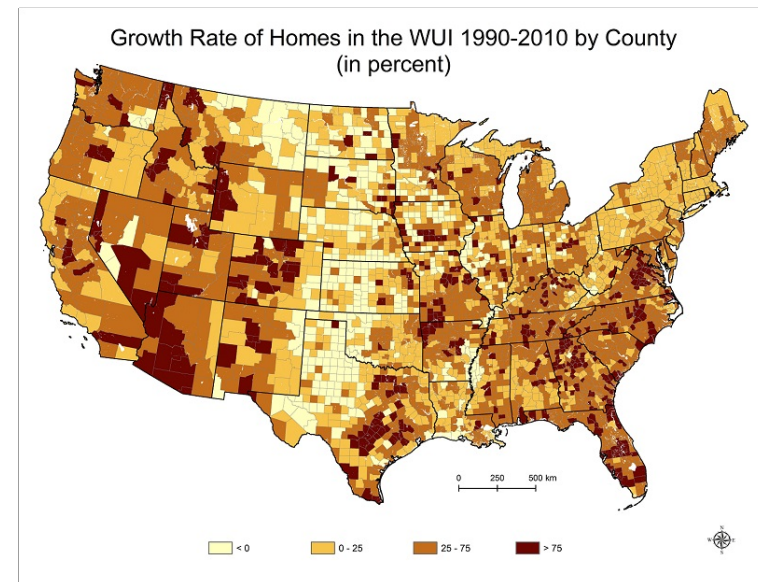


Wildfire Acres Burned (2018)



# Council History: Challenges

- Discrepancy in fire needed on the landscape vs. current use
  - Especially on private lands
- Lack of education about role and benefits of fire
- Expanding populations and WUI
- Limited burn windows



# Council History

- Established March 2, 2006
- Grew from a “Fire Team” formed 2002 to address many of the same issues we deal with today
  - Lack of information about prescribed fire among public, media, government
  - Air quality
  - Liability and insurance issues



# Council History

- Mission:
  - Foster cooperation among stakeholders
  - Optimize burning opportunities for natural ecosystems and wildlife
  - Promote public understanding of fire
  - Promote best fire management practices based on science
  - Reduce risk of damaging wildfires





# Council History

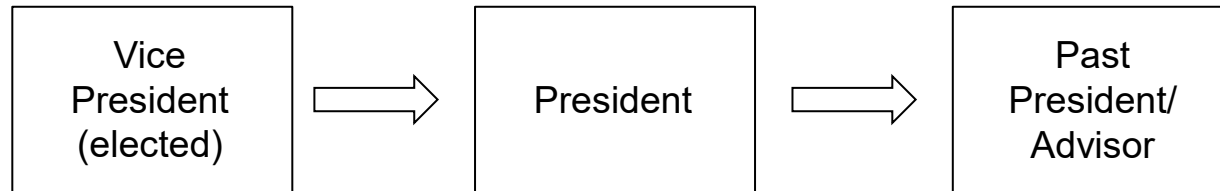
- Founding members include:
  - Consultants
  - NGOs – TNC, Quail Unlimited, NC Forestry Association, etc.
  - State agencies
  - Federal agencies

# Organizational Structure

- Non-profit corporation - 501(c)(3)
- Leadership selected by elections at annual meeting
  - Voting allowed in-person or via email



# Leadership



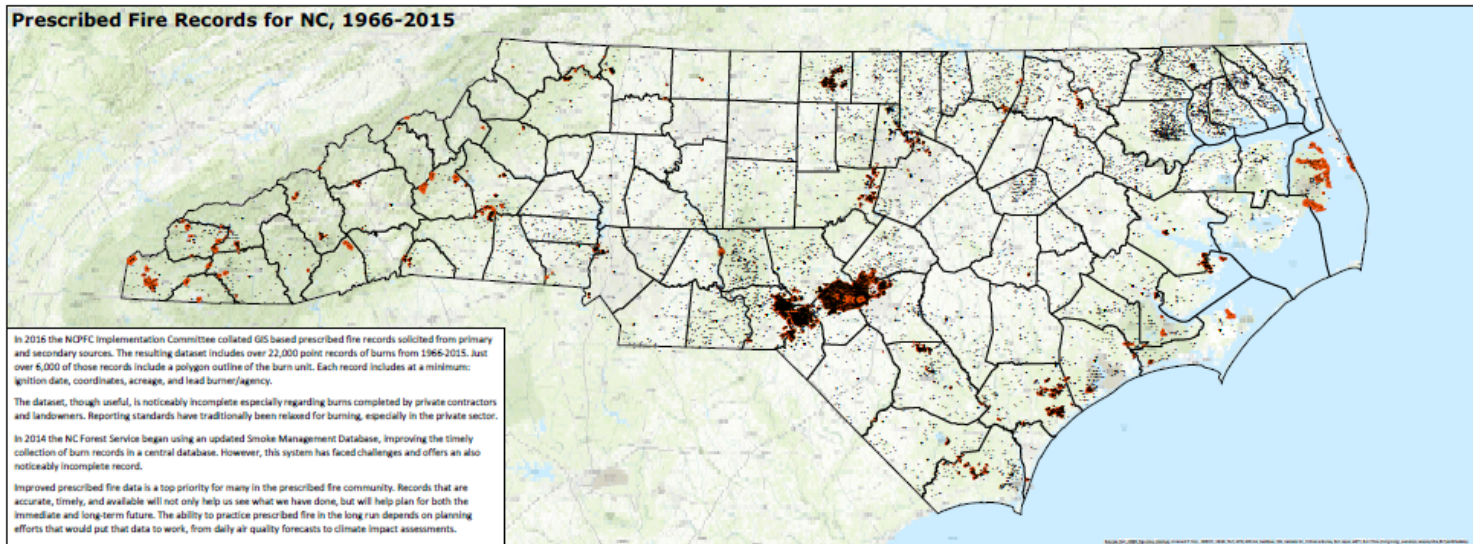
- Secretary
- Treasurer
- At-large board members (3)
- Other positions as needed (ex. Assistant treasurer, website manager)

# Membership

- Costs – membership year begins August 1
  - Annual - \$15, one year
  - Lifetime - \$150
  - Student - \$25, four years
- Dues (largely from the annual meeting) fund most Council work
  - Dues received vary depending on annual meeting location

# Activities and Issues

- Prescribed fire acreage reporting
- Policy, rules, and regulation coordination



# Activities and Issues

- Awards and recognition
- Information exchange: social media, emails, newsletters



# Activities and Issues

- Public outreach: fire festivals and education days



# Activities and Issues

- Training, including how to harness virtual platforms



 **Spreading the Flame**  
August 12<sup>th</sup>, 2020  
10am-3:30pm  
*Virtual Meeting*

North Carolina Prescribed Fire Council &  
Consortium of Appalachian Fire Managers & Scientists

Registration info will be sent out to all current North Carolina  
Prescribed Fire Council Members. Join or renew membership at:  
[ncprescribedfirecouncil.org/membership.html](http://ncprescribedfirecouncil.org/membership.html)

 Hosted by the North Carolina Forest Service

 **SFE WEBINAR:**

**PRESCRIBED FIRE IN  
PIEDMONT  
HARDWOODS**

**A JOINT WEBINAR WITH THE  
NC PRESCRIBED FIRE COUNCIL**

JUNE 10TH 1:00 - 3:00 PM ET



# Some Other Thoughts

- Include a variety of skillsets – including those with outreach and coordination-based positions
- Include younger people in leadership roles –institutional knowledge is key
- Periodic social events between annual meetings help cement relationships (at least pre-pandemic)

# Looking to the Future

- Many of the same challenges:
  - Capacity
  - Liability
  - Climate change and burn windows
- Part of this must include expanding who is part of our fire community, including addressing why those people aren't currently here



**Have more questions?**

**Get in touch:**

**[lekays@ncsu.edu](mailto:lekays@ncsu.edu)**

**919-513-2573**